



# Revenue cutter

Thorofare, St. Mary's

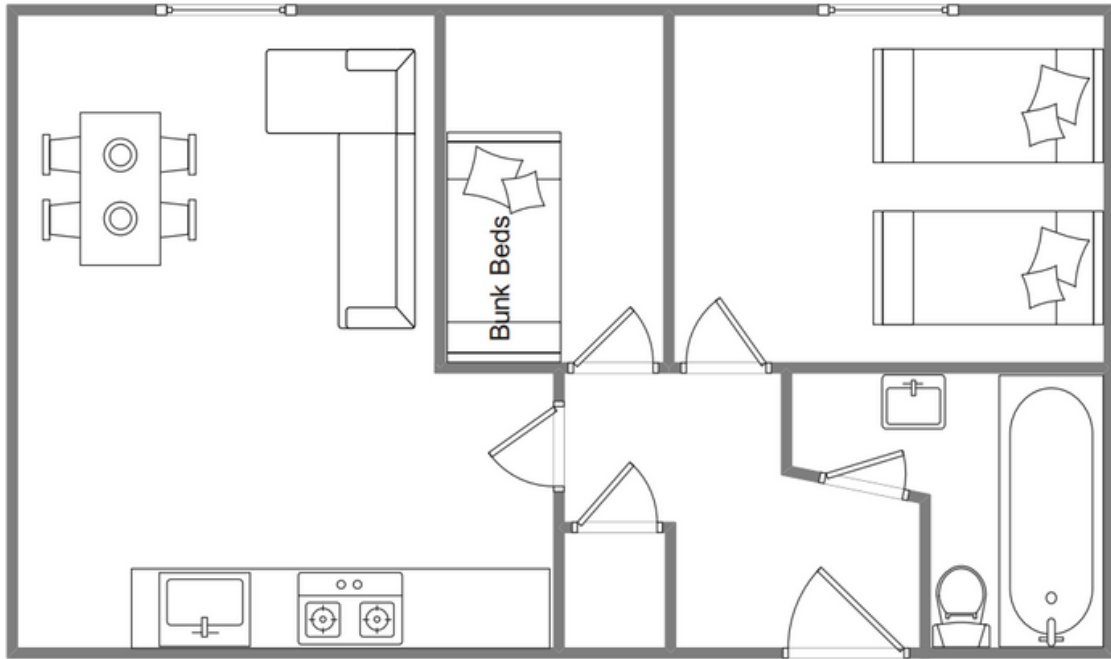


## Sleeps 4 | Monday Change over

- Twin arrangement
- Laundry Facilities
- Internet access
- Children welcome
- Close to Beaches
- Central town location

This recently updated first floor apartment with south-facing aspect is located on the Thorofare, a quiet back street that runs almost parallel to the main street in Hugh Town. The accommodation sleeps up to four guests and is well-appointed throughout with modern furniture, fixtures and fittings. The living space comprises an elegant open-plan lounge and kitchen with a dining area, a good size bedroom with twin beds, a bunk room and a large shower room. There are also coin operated communal laundry facilities available on the premises. Always in demand, Revenue Cutter is particularly well placed for convenient access to the shops, pubs and restaurants of Hugh Town and the quay for boating

# Layout



## Getting to the property

### Map of St Marys



Directions from the Quay | Walking time: 5-6 minutes

Head towards the entrance to the quay  
Turn left at The Mermaid Inn on to Hugh Street Keep to the left side of the road  
Go as far as the IOS Steamship Co. office

Turn left into the alley At the bottom of the alley turn right Go past Schooners Hotel The entrance to Harbour Lights is on the left

What3words:lends.loves.forgot

Scilly Self Catering  
Lower Strand  
Isles of Scilly, TR21 0PS

Enquiries@scillyselfcatering.com  
01720 422082  
www.scillyselfcatering.com