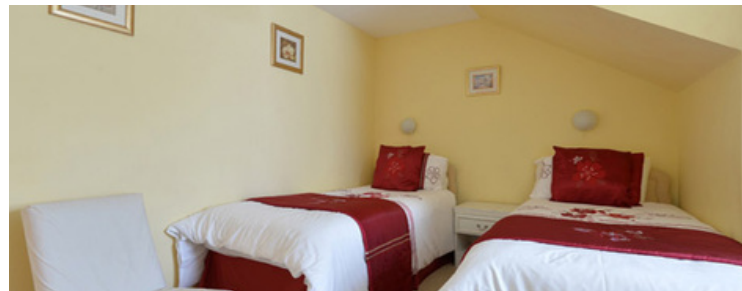




Old Customs House Flat

Well Lane, St. Mary's

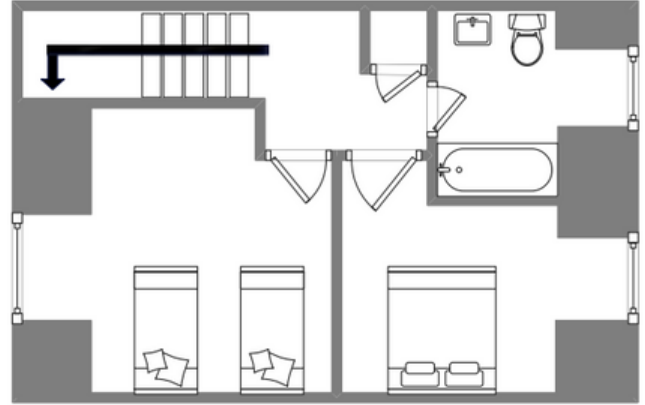
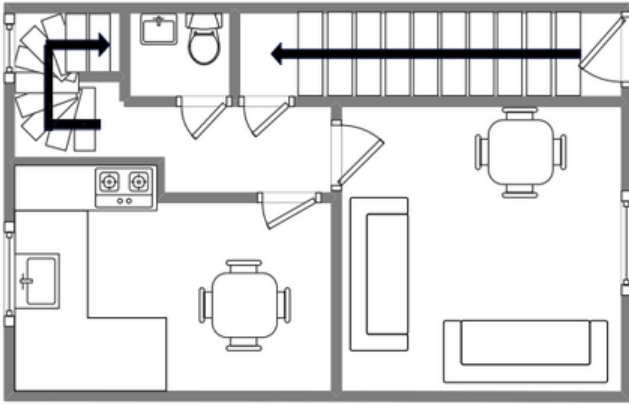


Sleeps 4 | Wednesday Change over

- Double or twin arrangements
- Internet access
- Children welcome
- Close to town centre
- Convenient for beaches

The Old Customs House Flat is a two bedroomed flat situated in a traditional Scillonian building in the heart of Hugh Town. It is only a few minutes' walk to the beach and harbour. This light and comfortable accommodation comprises of a large lounge with TV and DVD player and a separate well equipped kitchen diner. On the next floor there is a double room with TV, a twin room also with a TV. A large family bathroom provides both a shower and a bath. All linen is included (including beach towels) as is a hair dryer, iron and ironing board.

Layout



Getting to the property

Map of St Marys



Directions from the Quay | Walking time: 5-6 minutes

Head towards the entrance to the quay
Turn left at The Mermaid Inn on to Hugh Street
Cross road by Post Office

Enter arch next to Post office
Continue for about 20 yards
Old Customs House Flat is on the right

What3words:nickname.purchaser.storm

Scilly Self Catering
Lower Strand
Isles of Scilly, TR21 0PS

Enquiries@scillyselfcatering.com
01720 422082
www.scillyselfcatering.com