



# Sunny Creek Flat

Garrison Lane, St. Mary's

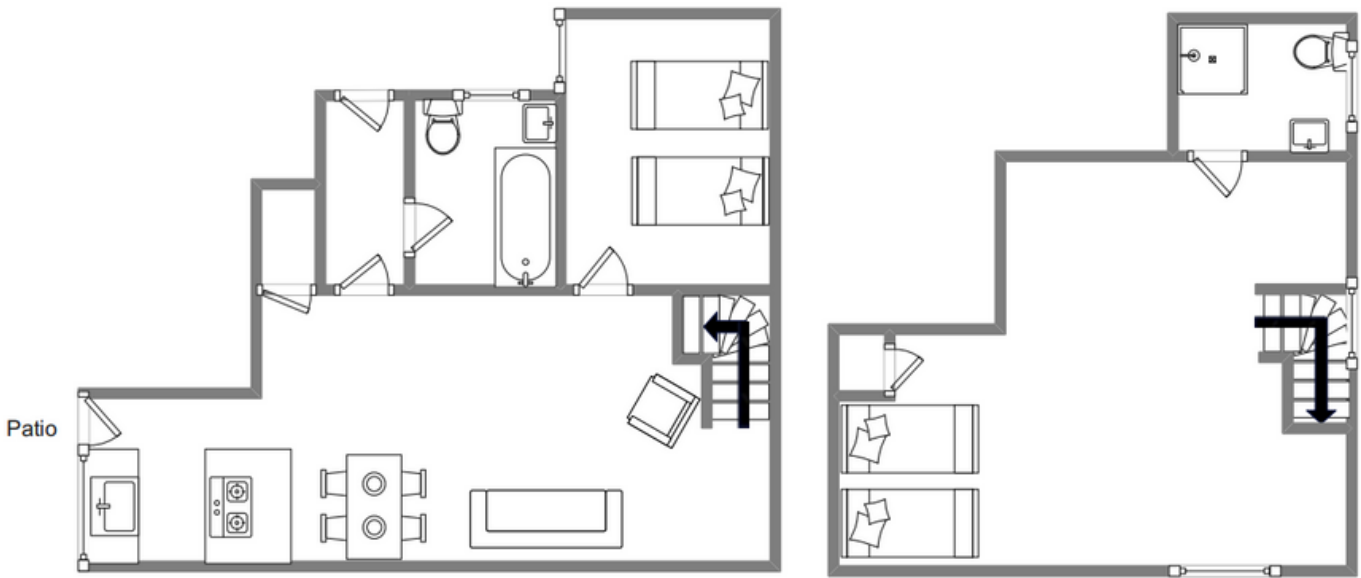


## Sleeps 4 | Thursday Change over

- Double and twin arrangements
- Children welcome
- Private patio area
- Internet access
- Central town location

Sunny Creek is tucked away in a quiet spot just off the main street in the centre of Hugh Town and offers ideal accommodation for a family or friends sharing. The house sleeps up to four guests in twin bedrooms, each with their own bathroom or shower. There is also a large open-plan kitchen lounge and dining room and the further benefit of a small south facing patio to the rear with tables and chairs. Sunny Creek offers easy access to the heart of Hugh Town so is suitable for people of all ages. The quay is just a short walk away and for those who love walking, a five-minute stroll takes you to the historic Garrison for one of the most panoramic walks on St Mary's and a favourite spot for sunset seekers.

# Layout



## Getting to the property

### Map of St Marys



### Directions from the Quay | Walking time: 6-8 minutes

Head towards the entrance to the quay  
 Turn left at The Mermaid Inn When you  
 reach the square, head right Proceed  
 along Jerusalem Terrace

Follow the road to the left on to Garrison  
 Lane Stop when you reach the Police  
 Station You will see a private entrance  
 leading to a path Sunny Creek is at the end  
 of the path

What3words:///drama.footballers.fuses

Scilly Self Catering  
 Lower Strand  
 Isles of Scilly, TR21 0PS

Enquiries@scillyselfcatering.com  
 01720 422082  
 www.scillyselfcatering.com