



# Springfield court 1

Church Road, St. Mary's

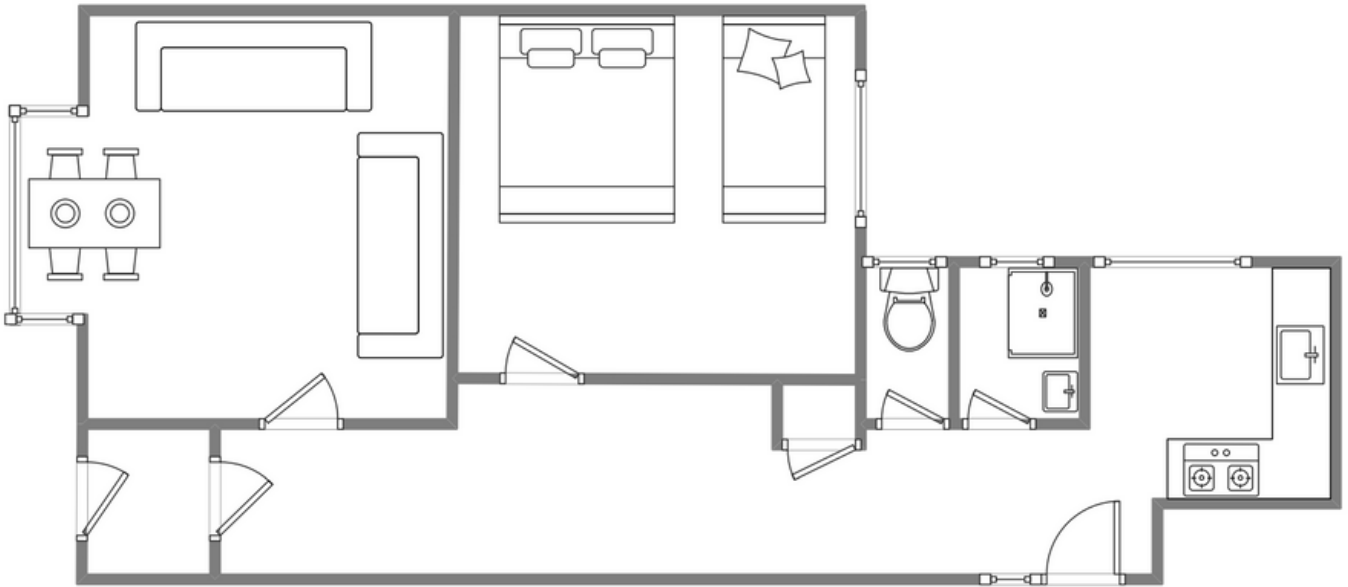


## Sleeps 3 | Saturday Change over

- King and extra single arrangement
- Close to town
- Laundry Facilities
- Outside seating area
- Internet access
- Children welcome

Springfield Court is an elegant Victorian terrace that was converted many years ago into apartments of various sizes, most of which retain several original features. This ground floor flat contains large rooms and high ceilings, which were typical of the Victorian era, and all rooms are entered from a wide hallway which immediately gives the feeling of space as soon as you walk through the door. The flat sleeps up to three guests in one bedroom containing both a king size bed and a single bed. There is also a lounge/with high-quality furnishings, a well-equipped kitchen with breakfast bar area, and a bathroom with shower and separate toilet. You will also have the use of a private south-facing front garden with outdoor seating.

# Layout



## Getting to the property

### Map of St Marys



Directions from the Quay | Walking time: 10 minutes

Head towards the entrance to the quay  
Turn left at The Mermaid Inn on to Hugh Street  
Keep to the left side of the road  
Continue along Hugh Street to Bordeaux shop

Cross the road to the right side, Walk straight ahead on to Church Street  
Go past the Methodist Church  
Springfield Court is on the left

What3words:///showering.deliver.jokers

Scilly Self Catering  
Lower Strand  
Isles of Scilly, TR21 0PS

Enquiries@scillyselfcatering.com  
01720 422082  
www.scillyselfcatering.com