



# Leumeah

5 Jackson's Hill, St Mary's, TR21 0JZ

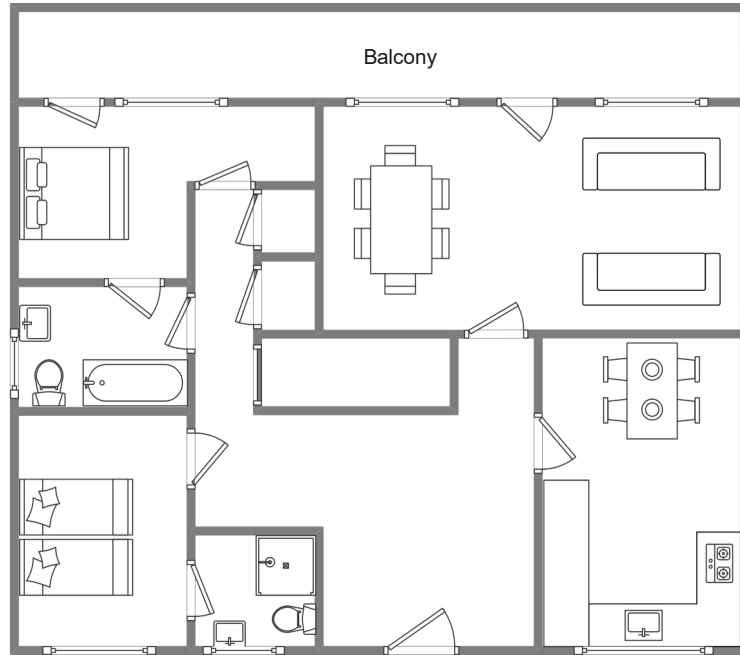


## Sleeps 4 | Thursday Change over

- Double and Twin Arrangement
- Internet Access
- Laundry Facility
- Convenient location for beaches and Quay

'Leumeah' is approached from the front and looks like you are entering a bungalow. It is actually built into the hillside and is the top floor apartment with permanent residents living underneath. You enter into a bright, large and airy hallway. There is a clean, well-equipped kitchen at the front which has a table and chairs for easy dining. A large lounge diner is at the rear of the apartment, with plenty of seating and a dining table should you wish to eat in here. Freeview, Wi-Fi and plenty of local information books and leaflets are here too. A door leads from this room onto the large balcony that runs the length of the apartment taking in the sea and island views. A perfect place to sit and have an early evening drink. Outdoor furniture is provided. The front bedroom can be a double or twin depending on your requirements. At the front of Leumeah is a small well-established front garden. This has a patio with seating and a barbeque. Perfect for breakfast, morning coffee or supper outdoors.

# Layout



## Getting to the property

### Map of St Marys



### Directions from the Quay | Walking time: 12-15 minutes

Head towards the entrance to the quay  
Turn left at The Mermaid Inn on to Hugh Street  
Keep left all the way out of Town  
Turn right by Island Carriers

Take first right into Jackson's Hill  
Go all the way up to approx. middle of the hill.  
Leumeah will be located on the left.

[What3words///saints.crush.enlightening](http://What3words///saints.crush.enlightening)

Scilly Self Catering  
Lower Strand  
Isles of Scilly, TR21 0PS

[Enquiries@scillyselfcatering.com](mailto:Enquiries@scillyselfcatering.com)  
01720 422082  
[www.scillyselfcatering.com](http://www.scillyselfcatering.com)