



# The Annexe

Pier House, The Bank, St. Marys

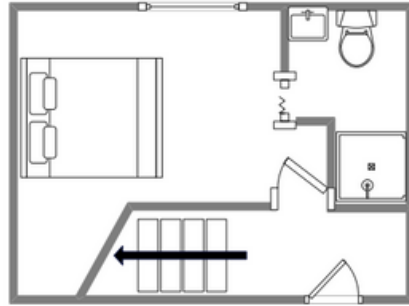
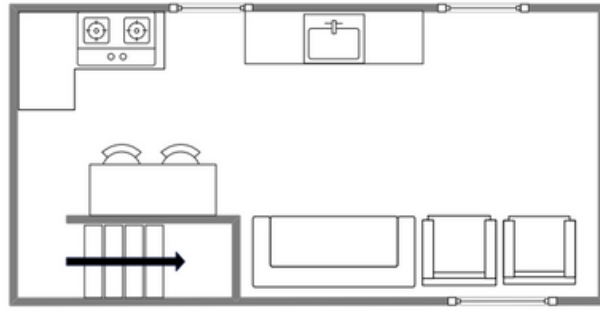


## Sleeps 2 | Monday Change over

- Double or twin bed arrangement + sofa bed
- Town Centre location
- Laundry Facilities
- Courtyard garden
- Internet Access
- Pets and Children welcome

The Annexe is a recently refurbished, two-storey apartment in the heart of Hugh Town, opposite but set back from the historic Mermaid Inn and almost touching the quay. The accommodation is split over two floors and sleeps two in a snug downstairs double bedroom with a modern en suite shower room. The first floor contains a spacious, light and airy open plan living area with stunning sea views across to Samson, Bryher and Tresco. There is also a fully equipped modern galley style kitchen and a living/dining area which offers the option of a sofa bed, making the annexe equally suitable for twin occupancy. The Annexe is attached to Pier House, a traditional character cottage, and together they share a lovely sheltered courtyard garden and external laundry facilities.

# Layout



## Getting to the property



Directions from the Quay | Walking time: 2 minutes

Head towards the entrance to the quay  
Turn left at The Mermaid Inn on to Hugh Street  
Pier House is directly opposite

Take the side entrance, not the front door  
Enter the courtyard through a gate on the right  
The door to the Annexe is straight ahead

What3words:replaces.stunt.rewriting

Scilly Self Catering  
Lower Strand  
Isles of Scilly, TR21 0PS

Enquiries@scillyselfcatering.com  
01720 422082  
www.scillyselfcatering.com