

TREVESSA

The Parade, St Mary's

Sleeps 5 | March - October | Saturday changeover |



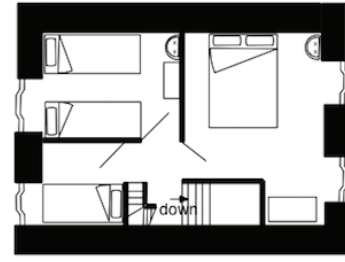
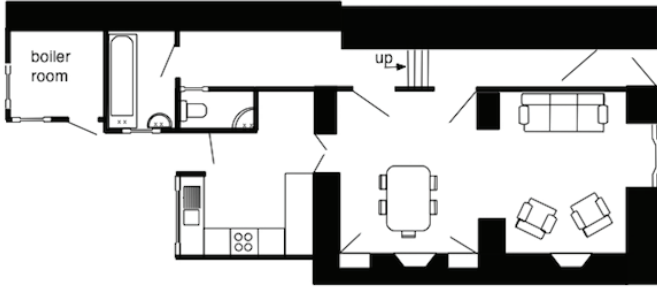
Trevezza is a traditional Scillonian cottage situated in the heart of Hugh Town, opposite an attractive park.

Sleeping up to five guests in one double, one twin and one single bedroom, this terraced cottage is well-presented throughout with high quality and comfortable furnishings.

The ground floor space comprises a cosy lounge to the front of the house, a fully-equipped kitchen, complete with dishwasher, a bathroom and separate cloakroom. There is the added benefit of an enclosed south-facing garden.

At Trevezza you are never more than a few minutes level walk away from everything Hugh Town has to offer, making it an ideal choice for families or groups of friends.

Layout



- Sleeps 5
- Double, twin and single arrangement
- Laundry facilities
- Internet access
- Children welcome
- Town centre location

Directions from the Quay Walking time: 5 - 6 minutes

Head towards the entrance to the quay
 Turn left at The Mermaid Inn on to Hugh Street
 Keep to the left side of the road

When you come to the park cross to the right
 Continue to the end of the park
 Trevesa is on your right



Lower Strand
 St Mary's
 Isles of Scilly TR21 0PS

enquiries@scillyselfcatering.co.uk
 01720 422082
 www.scillyselfcatering.com