

## MINALTO, APARTMENT 1 Church Street, St Mary's

Sleeps 4 | March - October | Friday changeover | £490 - £930 per week



★★★★★

✓ Wi-Fi

✓ Children

X Pets

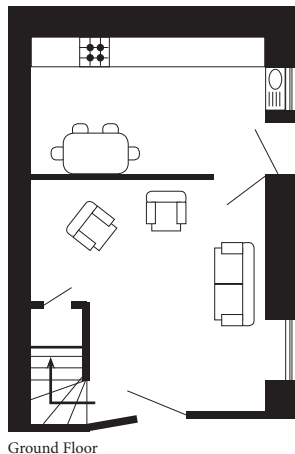
This striking three-storey Victorian town house forms part of a granite terrace built from money recovered from the wreck of the SS Schiller, one of the largest ocean liners of her time. Minalto has been converted into four high quality apartments.

Apartment 1 sleeps four guests in one double and one twin bedroom and contains a spacious well-appointed lounge with a separate and fully equipped dining kitchen complete with dishwasher. A modern bathroom with shower over the bath and heated towel rail completes the internal layout where attention to detail and high quality furnishings are obvious throughout. There are also shared laundry facilities on site.

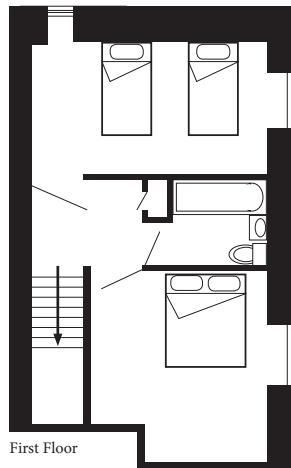
Situated a mere five-minute level walk from the heart of Hugh Town, Minalto is also convenient for local beaches and the quay.

# Layout

Minalto 1



Ground Floor



First Floor

- Sleeps 4
- Double and twin arrangements
- Laundry facilities
- Bath and shower
- Internet access
- Children welcome
- Close to town centre
- Convenient for beaches

## Directions from the Quay Walking time: 6 - 10 minutes

Head towards the entrance to the quay  
 Turn left at The Mermaid Inn on to Hugh Street  
 Keep to the left side of the road  
 Continue along Hugh Street to Bordeaux shop

Cross the road to the Town Hall  
 Walk straight ahead on to Church Street  
 Minalto is about 100 yards on the right  
 Apartment 1 entrance is on the ground floor



Lower Strand  
 St Mary's  
 Isles of Scilly TR21 0PS

enquiries@scillyselfcatering.com  
 01720 422082  
[www.scillyselfcatering.com](http://www.scillyselfcatering.com)