

LOWER GANILLY Jackson's Hill, St Mary's

Sleeps 4 | March - October | Wednesday changeover | £440 - £1,110 per week



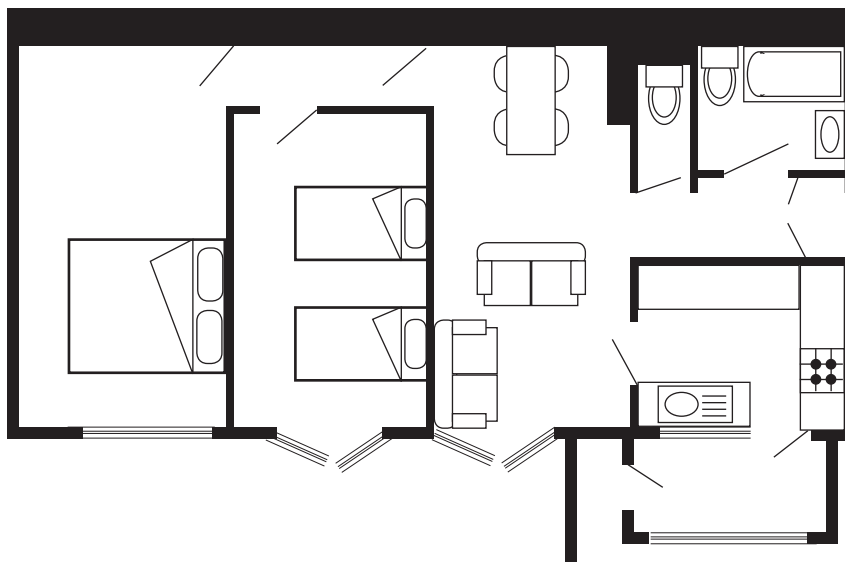
Lower Ganilly is set in an elevated position and boasts stunning sea views from the bedrooms over Porthmellon Beach.

The accommodation is well-presented throughout and sleeps up to four guests in one twin room and one double room. The layout includes a fully equipped kitchen, a comfortable open-plan lounge/dining room, a bathroom and separate toilet.

There is also an attractive garden, which provides an extremely pleasant environment in which to sit and enjoy the sunshine.

A ten-minute walk will take you to the amenities of Hugh Town and it is also convenient for Old Town with its historic church, beautiful beach and cafes.

Layout



- Sleeps 4
- Double and twin arrangement
- Sea Views
- Laundry facilities
- Private garden
- Internet access
- Pets allowed
- Children welcome

Directions from the Quay Walking time: 12 - 15 minutes

Head towards the entrance to the quay
 Turn left at The Mermaid Inn on to Hugh Street
 Keep left all the way out of Town
 Turn right by Island Carriers

Take first right into Jackson's Hill
 Take immediate turn to the right
 Ganilly is straight ahead
 Lower Ganilly is on the ground floor

