

AN TREATH

Porthcressa Road, St Mary's

Sleeps 6 | Saturday changeover

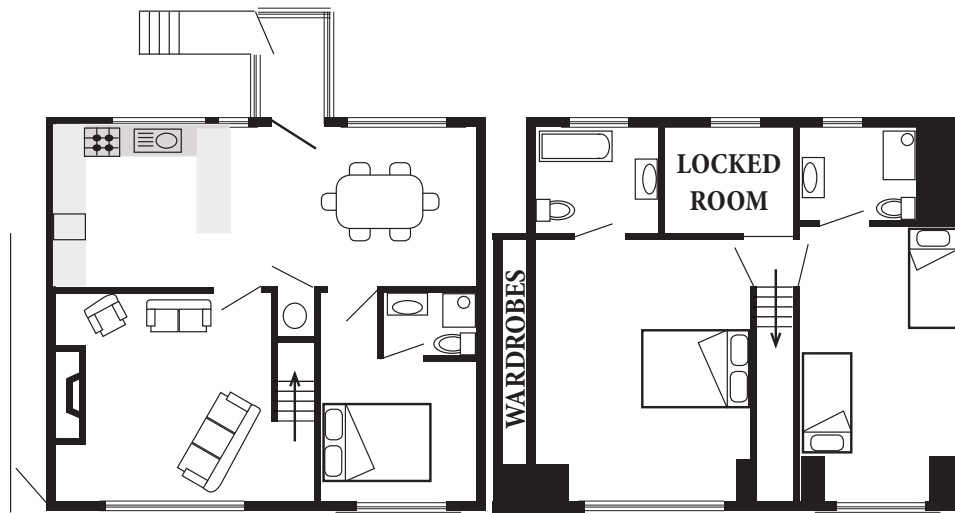


Quite literally a stone's throw from the beach and just a short level walk from the centre of Hugh Town, An Treath is a perfect base for your holiday. The accommodation is spacious and well-appointed throughout and most rooms have stunning sea views.

Located on the first and second floor of a large terraced building, An Treath sleeps up to six guests in one twin and two double bedrooms. All bedrooms have en suite facilities, making this a holiday home that is equally suited to families and groups of friends.

The large, fully-equipped (dishwasher, washing machine, tumble dryer) kitchen-diner offers plenty of space for meals, while the south-facing lounge provides a warm, relaxing space with an abundance of natural light.

Layout



- Sleeps 6
- Double and twin arrangements
- En suite bathrooms
- Outstanding sea views
- Washing facilities
- Dishwasher
- Internet access
- Close to town and beaches

Directions from the Quay Walking time: 5 - 6 minutes

Head towards the entrance to the quay
 Turn left at The Mermaid Inn
 Continue along High Street
 Cross to the Bishop & Wolf public house

Continue on to Silver Street
 Keep straight ahead on to Porthcressa Road
 Continue for about 50 metres
 An Treath is on the left

